

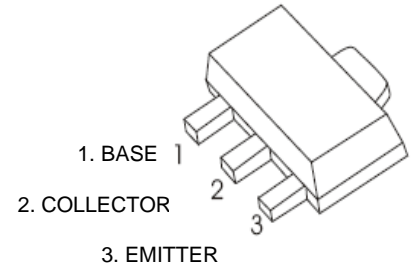


BCX53-52-51 Plastic-Encapsulate Transistors

TRANSISTOR (PNP)

FEATURES

- NPN Complements to BCX54,BCX55,BCX56
- Low Voltage
- High Current



APPLICATIONS

- Medium Power General Purposes
- Driver Stages of Audio Amplifiers

SOT-89-3L

**MARKING:BCX51:AA, BCX51-10:AC, BCX51-16:AD
BCX52:AE, BCX52-10:AG, BCX52-16:AM
BCX53:A H, BCX53-10:AK, BCX53-16:AL**

MAXIMUM RATINGS (T_a=25°C unless otherwise noted)

Symbol	Parameter		Value	Unit
V _{CB0}	Collector-Base Voltage	BCX51	-45	V
		BCX52	-60	
		BCX53	-100	
V _{CEO}	Collector-Emitter Voltage	BCX51	-45	V
		BCX52	-60	
		BCX53	-80	
V _{EBO}	Emitter-Base Voltage		-5	V
I _C	Collector Current		-1	A
P _C	Collector Power Dissipation		500	mW
R _{θJA}	Thermal Resistance From Junction To Ambient		250	°C/W
T _J ,T _{stg}	Operation Junction and Storage Temperature Range		-55~+150	°C



ELECTRICAL CHARACTERISTICS ($T_a=25^{\circ}\text{C}$ unless otherwise specified)

Parameter	Symbol	Test conditions	Min	Typ	Max	Unit
Collector-base breakdown voltage	$V_{(BR)CBO}$	$I_C=-100\mu\text{A}, I_E=0$	BCX51	-45		V
			BCX52	-60		
			BCX53	-100		
Collector-emitter breakdown voltage	$V_{(BR)CEO^*}$	$I_C=-10\text{mA}, I_B=0$	BCX51	-45		V
			BCX52	-60		
			BCX53	-80		
Emitter-base breakdown voltage	$V_{(BR)EBO}$	$I_E=-100\mu\text{A}, I_C=0$	-5			V
Collector cut-off current	I_{CBO}	$V_{CB}=-30\text{V}, I_E=0$			-0.1	μA
Emitter cut-off current	I_{EBO}	$V_{EB}=-5\text{V}, I_C=0$			-0.1	μA
DC current gain	$h_{FE(1)^*}$	$V_{CE}=-2\text{V}, I_C=-5\text{mA}$	63			
	$h_{FE(2)^*}$	$V_{CE}=-2\text{V}, I_C=-150\text{mA}$	63		250	
	$h_{FE(3)^*}$	$V_{CE}=-2\text{V}, I_C=-0.5\text{A}$	40			
Collector-emitter saturation voltage	$V_{CE(sat)^*}$	$I_C=-0.5\text{A}, I_B=-50\text{mA}$			-0.5	V
Base -emitter voltage	V_{BE^*}	$V_{CE}=-2\text{V}, I_C=-0.5\text{A}$			-1	V
Transition frequency	f_T	$V_{CE}=-5\text{V}, I_C=-10\text{mA}, f=100\text{MHz}$		50		MHz

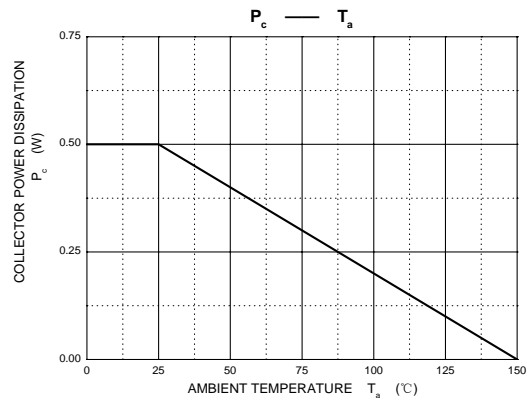
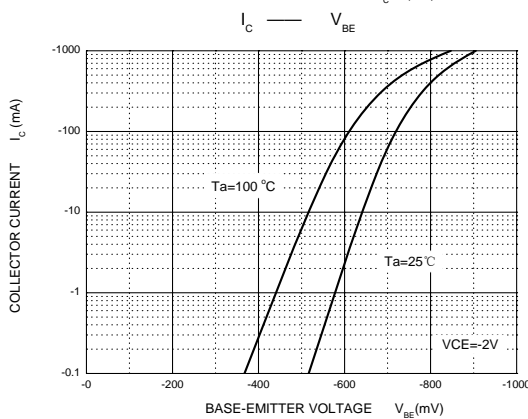
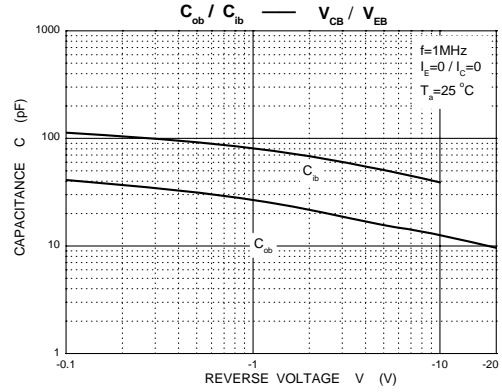
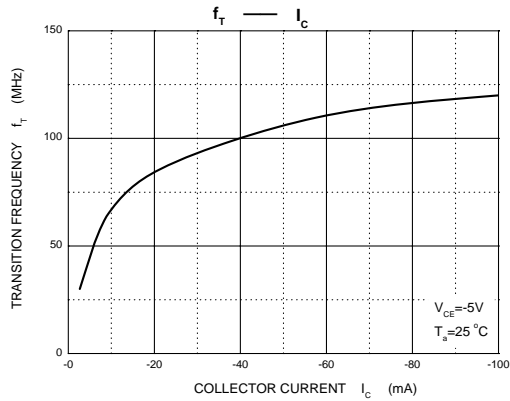
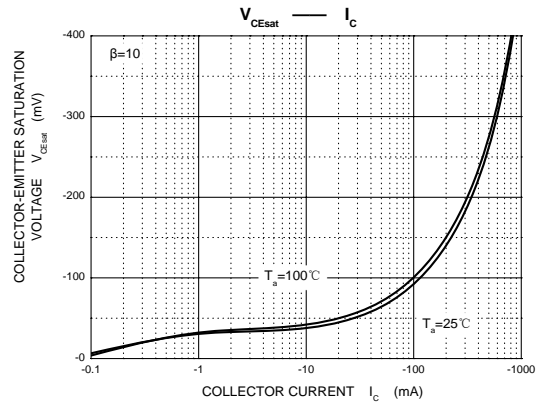
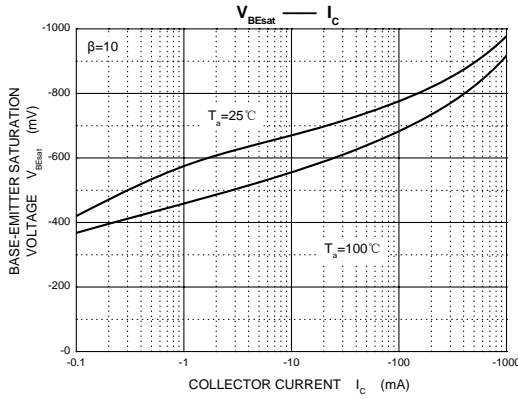
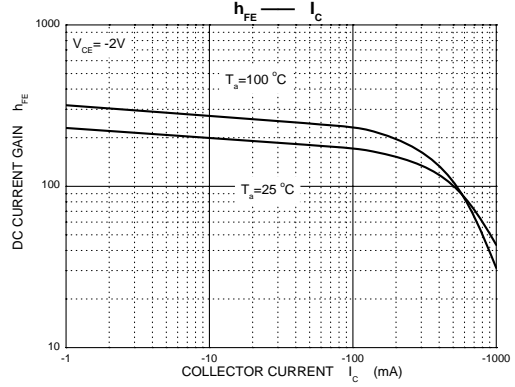
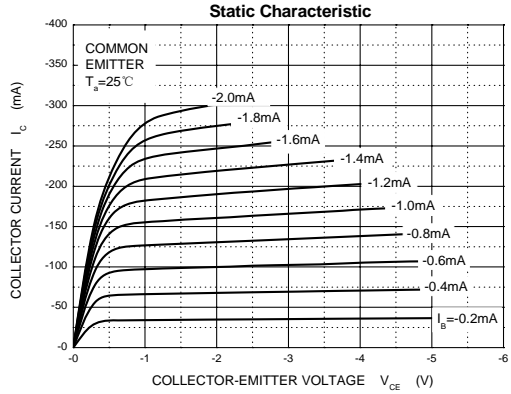
* Pulse Test

CLASSIFICATION OF $h_{FE(2)}$

RANK	BCX51 BCX52 BCX53	BCX51-10 BCX52-10 BCX53-10	BCX51-16 BCX52-16 BCX53-16
RANGE	63-250	63-160	100-250

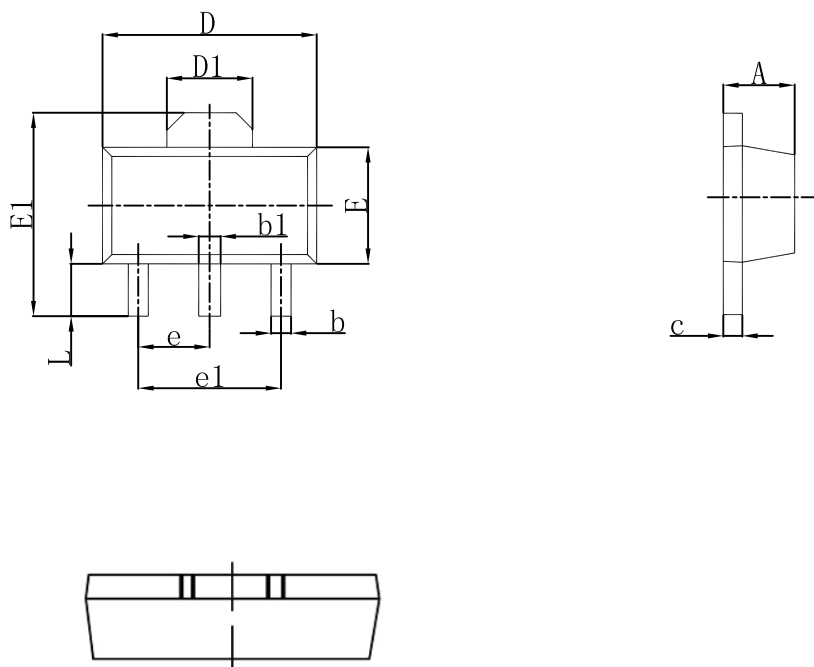


Typical Characteristics





SOT-89-3L Outlines Dimensions



Symbol	Dimensions In Millimeters		Dimensions In Inches	
	Min	Max	Min	Max
A	1.400	1.600	0.055	0.063
b	0.320	0.520	0.013	0.020
b1	0.400	0.580	0.016	0.023
c	0.350	0.440	0.014	0.017
D	4.400	4.600	0.173	0.181
D1	1.550 REF.		0.061 REF.	
E	2.300	2.600	0.091	0.102
E1	3.940	4.250	0.155	0.167
e	1.500 TYP.		0.060 TYP.	
e1	3.000 TYP.		0.118 TYP.	
L	0.900	1.200	0.035	0.047